



The Amelia

- 3 bedrooms
- 2.5 Baths
- 2,167 sq.ft.

The Cottage Collection



Discover the difference at
www.konterhomes.com





The Amelia

- 3 bedrooms
- 2.5 Baths
- 2,167 sq.ft.

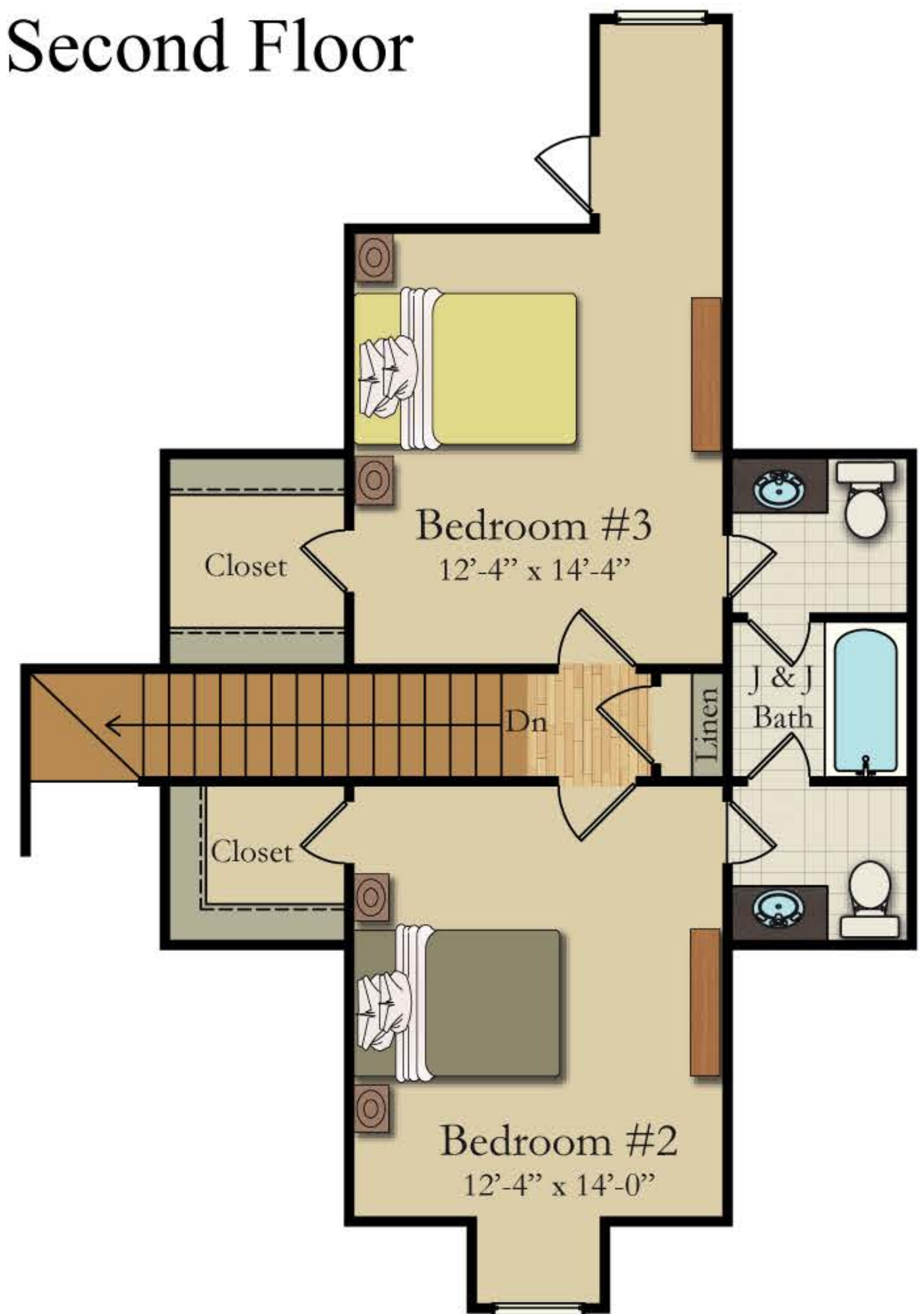
Key Features

- Architectural shingles and metal roofing (plan dependent), Hardie Board exterior with Tabby Stucco foundation
- Hardwood flooring: Master bedroom, foyer, powder room, dining room, kitchen/breakfast area & great room.
- Fireplace w/ brick hearth & custom wood mantle.
- Chef's kitchen package: stainless steel appliances - gas cooktop, wall ovens, built-in microwave, chimney style vent hood, dishwasher & disposer.
- Granite counter tops & ceramic tile backsplash in kitchen.
- Ceramic tile flooring in all bathrooms.
- Ceramic tile shower & jetted tub surround and granite counter tops in owner's bathroom.

SCAN QR CODE
TO DISCOVER MORE



Second Floor



First Floor



Kontor Quality Homes, Inc. reserves the right to make modifications to floor plans, materials and specifications without notice. Dimensions are approximate. Illustrations are artist's renderings only. The floor plans and elevations of this quality home is copyrighted. We will enforce our federal copyrights to protect the investment of our home buyers. Kontor Homes, Inc. 2019. Kontor Quality Homes does not discriminate against applicants, residents or employees on the basis of their race, color, creed, religion, sex, national origin, age, familial status or disability.